

PALETTE & MOSAIC

by Marcia Derse



WINDHAM FABRICS

812 Jersey Avenue, Jersey City, N.J. 07310

Phone: (201) 659-0444 • Fax: (201) 659-9719

www.windhamfabrics.com • email: retail@windhamfabrics.com

Marcia Derse



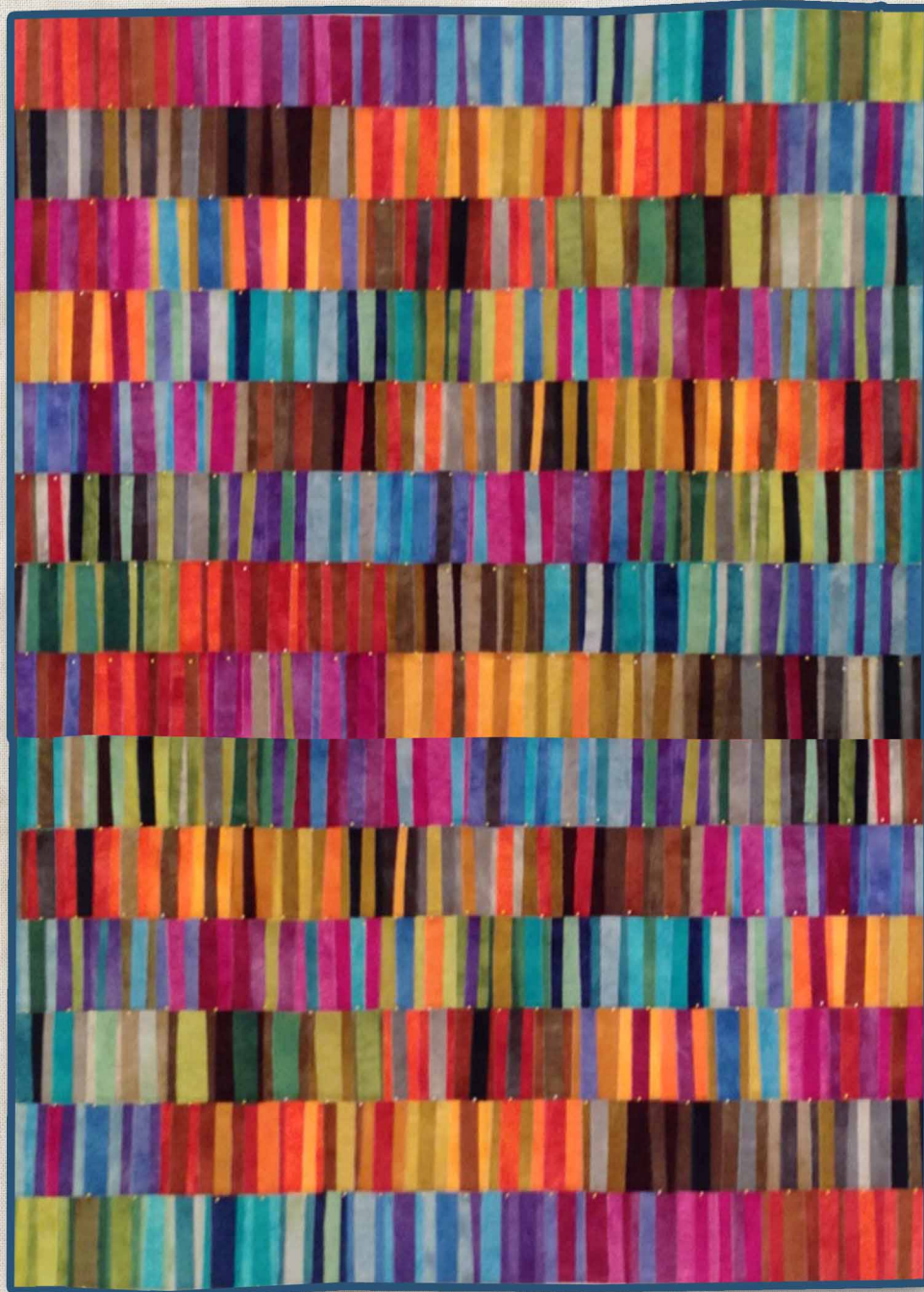
Windham Fabrics is now home to **Marcia Derse**, an established modern fiber artist and fabric designer. For the last two decades, Marcia has honed and perfected her techniques for creating unique pieces of hand-dyed and hand-painted fabrics. She brings a completely new vocabulary of color to the quilting world.

From her studio, Marcia starts with a blank canvas; a bolt of muslin, fabric dyes, and the primary colors in silkscreen paints. The world is her palette---when she sets to work, she gathers colors, images and objects from everywhere. Anything that catches her eye outdoors or in the studio becomes an artist's tool: pine cones, spoons, brushes, homemade stamps, and bamboo pens. She applies paint with abandon, exhausting the cups of color, trying every combination. Each piece of fabric is a fresh and innovative arrangement of color, form, and texture. Bringing together these stand-alone pieces, her fabric collections are harmonious groupings that represent a central idea or concept. She draws her themes from the seasons or her travels or sometimes simply a new texture found in her environment.

Marcia is a frequent mainstay at the country's most prestigious fabric shows and art fairs, always with a colorful, enticing booth that matches its artwork in creativity and design. She debuts at Windham Fabrics with two exciting collections: Palette and Mosaic. Check back often for the latest from this wonderful designer and learn more about Marcia, her fabric collections and artwork, at her website www.MarciaDerse.com.

Free Pattern

Marcia Derse



"Sticks"

Designed by Marcia Derse

Interpreted and Written by Sally Keller

Size: 60" x 72"

Fabric Requirements:

- 1/4 yard each of the 40 skus in the **Palette** collection
- cut into wonky strips to create a project with color movement
- 3/4 yards 37098-28 Dark Teal for binding
- 5 1/4 yards backing

Free Pattern available at: www.windhamfabrics.com December 2013

WINDHAM FABRICS

Marcia derse

Pattern for Sale

2 1/2" Strip Friendly!



"Grammy Patches"

Designed by Rebecca Silbaugh of Ruby Blue Quilting Studio

Palette

Fabric Requirements:

Size: 40" x 60"

Uses one 2 1/2" strip roll (40 skus)
3 yards backing and 1/2 yard binding

Size: 60" x 80"

Uses two 2 1/2" strip rolls (80 skus)
5 yards backing and 2/3 yard binding



Rebecca Silbaugh

RBQ #81 Pattern for Sale through:
<http://rubybluequilts.blogspot.com>

Pattern for Sale

Marcia derse

5" Square Friendly



"Turnstile"

Designed by Debbie Grifka
of Esch House Quilts
Size: 41" x 41"

Fabric Requirements:

Mosaic

One 5" square pack of Mosaic
1/2 yard 37089-2 Blue

Palette

1 yard 37098-40
1 1/4 yard for backing



Debbie Grifka

The Turnstile pattern will include
four bigger sizes as well as the baby quilt size shown

Pattern for Sale through:
www.eschhousequilts.com

WINDHAM FABRICS

Pattern for Sale

Marcia derse

Bonus Patterns available through
www.plumtreequilts.com



"Confetti"

Designed by Laura Blanchard of Plum-Tree Quilts

Size: 54" x 64"

Fabric Requirements:

Mosaic

2 1/8 yards 37091-6 Charcoal

1 5/8 yards 37095-1 Tan

3 3/4 yards 37094-7 Grey for Backing

Palette

1 3/8 yards 37098-01 Vine Black (includes binding)

One fat quarter of each of the following:

37098-05 Saddle	37098-23 Mimi Pink	37098-30 Mediterranean
37098-06 Mustard	37098-25 Concord Grape	37098-32 Bluebird
37098-20 Cranberry	37098-27 Blueberry	37098-34 Spruce
37098-22 Cardinal	37098-28 Dark Teal	37098-36 Grass
		37098-40 Chartreuse

4 yards Backing

Pattern for Sale through: www.checkerdist.com, www.thepatternpeddlers.com
or www.plumtreequilts.com



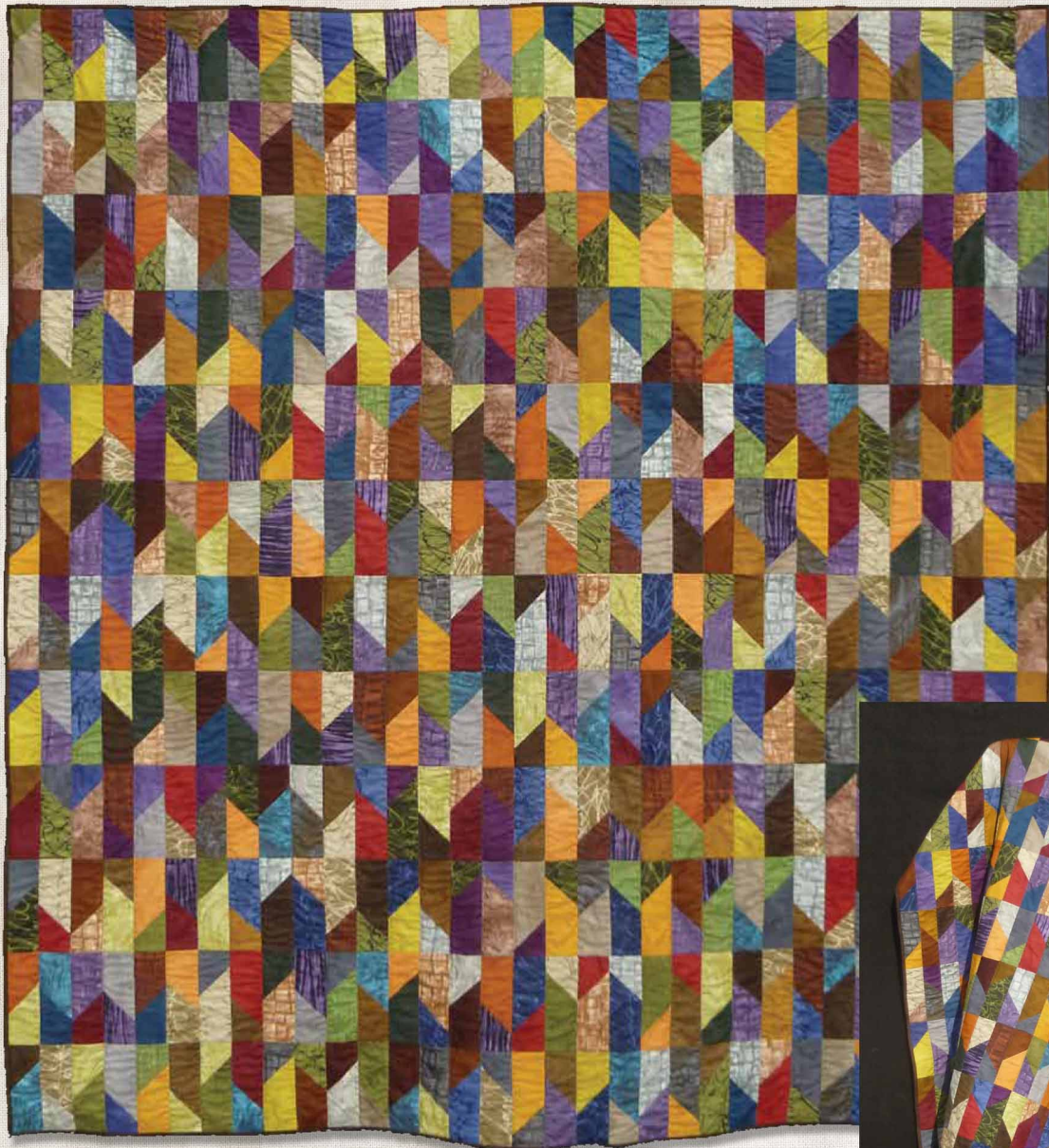
Laura Blanchard

WINDHAM FABRICS

Pattern for Sale

Marcia derse

2 1/2" Strip Friendly!



They say variety is the spice of life and some people like it really spicy!



"Rock Candy"

Designed by Kenna Ogg of Madison Cottage Design

Size: 66" x 72" * other sizes available

Fabric Requirements:

This quilt is a combination of **Palette & Mosaic**

22 fat quarters or (80) 2 1/2" strips

5/8 yard binding / 4 yards Backing

Pattern for Sale through:

kenna@madisoncottagedesign.com

www.checkerdist.com

www.eeschenck.com

www.petersen-arne.com

www.unitednotions.com



Kenna Ogg

ROCK CANDY

MADISON COTTAGE DESIGN

FABRIC REQUIREMENTS

size	fat quarters OR 2 1/2" strips	backing	binding
small 42" x 54"	11 OR 40	2 1/4 yds.	3/8 yard
medium 66" x 72"	22 OR 80	4 yds.	5/8 yard
large 78" x 90"	33 OR 120	5 1/2 yds.	2/3 yard

Copyright 2012 Kenna Ogg, Madison Cottage Design
www.madisoncottagedesign.com
MCD-RC112

WINDHAM FABRICS

Free Pattern

Marcia derse



"Gem Stones"



Heather Jones

By Heather Jones, Olive and Ollie

Size: 60" x 60"

Fabric Requirements

Palette

1 Fat Quarter each:

37098-21 Wine, 37098-24 Pink

37098-25 Concord Grape, 37098-26 Lavender

37098-27 Blueberry, 37098-28 Dark Teal

37098-32 Bluebird, 37098-33 Ocean

2 yards 37098-12 Chalk for the background on the front

1/2 yds 37098-12 Chalk for the binding

4 yards 37098-40 Chartreuse for the backing

Free Pattern available at: www.windhamfabrics.com December 2013